

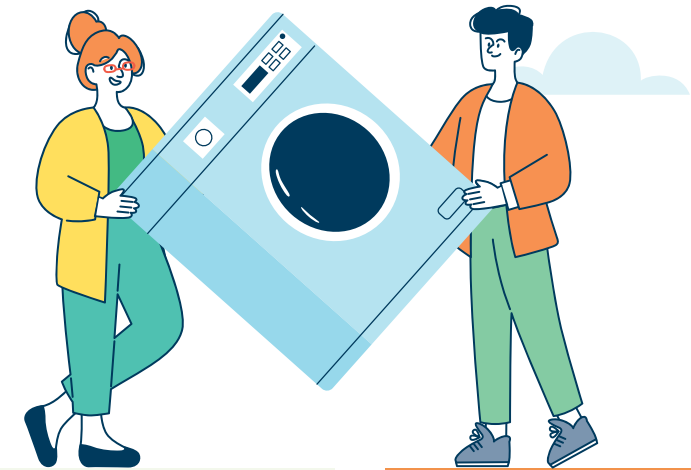
# Bulky Items



## Door-to-Door Collection is offered

Bulky items are non-upholstered items that are too big to put in a bag, box or trash can, with the exception of mattresses and box springs, which have their own separate collection. These items are reclaimed and recovered. Bulky items are not accepted during the household waste collection.

Before throwing away an item that may still be useful, we encourage you to post it on an exchange or resale site, or contact a not-for-profit organization.

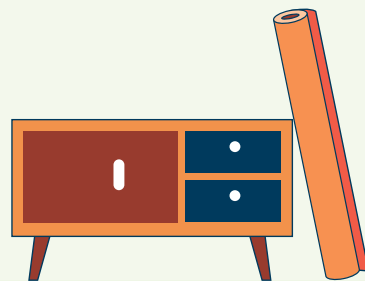


## A few Instructions to Follow

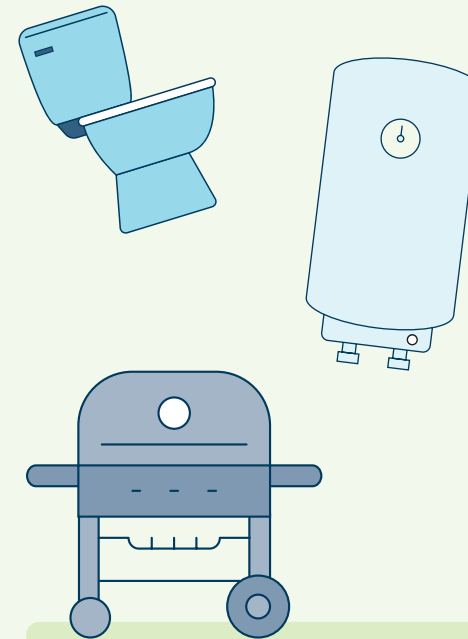
- Your bulky items must be placed in your driveway, at the curb, after 6 p.m. the day before and before 7 a.m. the day of collection.
- The weight of each item must not exceed 220 lb (100 kg), and the maximum dimensions are 1.8 m (6 ft) by 1.2 m (4 ft).
- For each address or apartment building, a maximum of 10 items or the equivalent of 5 m<sup>3</sup> is accepted per collection.
- Sharp or dangerous materials must be made safe (i.e., remove any glass, mirrors, nails, screws, etc.).
- Wherever possible, items should be tied in bundles to avoid scattering and to facilitate their collection.

## Accepted Materials

- Baths, toilets and sinks;
- Propane gas barbecues (without the tank);
- Household appliances (except those containing refrigerant gas);
- Mirrors, windows and glass with a maximum dimension of 24 x 36 in (secured);
- Furniture made of wood, metal, plastic or any other materials (tables, chairs, desks, chests of drawers, bookcases, cupboards, filing cabinets, etc.);
- Electric baseboards, range hoods, etc.;
- Doors;
- Hot water tanks;
- Carpets (rolled up);
- Pool liners (rolled up);
- Any other large household items.



! These items may also be brought to an ecocentre.



## ! Electronic devices

Electronic devices must be brought to an ecocentre or one of the official drop-off points of the Electronic Products Recycling Association (EPRA).



## Prohibited items

- Paints, solvents, oils, pesticides, fertilizers, aerosols, batteries, etc.;
- Tires;
- Halocarbons (refrigerators, freezers, dehumidifiers, air conditioners, etc.);
- Electronic devices (televisions, cell phones, players, etc.);
- Upholstered items (mattresses, couches, box springs, sofas, etc.);
- Wood or construction or renovation materials;
- Stone, bricks, rocks, earth, etc.;
- Tree trunks, branches and logs;
- Large cardboard boxes;
- Children's slides over 6 feet;
- Children's swimming pools;
- Carpets over 6 feet;
- Wooden palettes;
- Hot tubs.