

---

# LIVING IN POINTE-CLAIRE

SUMMER - FALL 2019



Pointe  
Claire

# LIVING IN POINTE-CLAIRE

SUMMER – FALL 2019

## SUMMARY

02 YOUR CITY COUNCIL

03 A WORD FROM  
THE MAYOR

04 CITY NOTES

07 ONLINE SERVICES

09 REVITALIZATION  
OF THE VILLAGES

10 ENVIRONMENT

10 Sheep at Edgewater Park

11 Pilot Project – Urban  
Container Gardens

11 Green line

12 Commemorative  
Programs

13 Educational Gardens

14 Terra-Cotta Natural Park

15 Waste Management

16 YOUTH  
ADVISORY BOARD

18 GRANTS

20 BY-LAWS

21 SECURITY

21 Sight Triangle

22 Road Safety Campaign

23 Emergency Measures

24 TONY-PROUDFOOT  
PARK

26 MAP OF  
CONSTRUCTION  
PROJECTS

Published by the City of Pointe-Claire

[www.pointe-claire.ca](http://www.pointe-claire.ca)

[twitter.com/pointe\\_claire](https://twitter.com/pointe_claire)

Graphic design: duval design communication

## YOUR CITY COUNCIL



**JOHN BELVEDERE**

Mayor

514-630-1207

[john.belvedere@](mailto:john.belvedere@pointe-claire.ca)

[pointe-claire.ca](mailto:pointe-claire.ca)



**CLAUDE COUSINEAU**

Councillor

District 1 – Cedar / Le Village

514-630-1288

[claudio.cousineau@](mailto:claudio.cousineau@pointe-claire.ca)

[pointe-claire.ca](mailto:pointe-claire.ca)



**PAUL BISSONNETTE**

Councillor

District 2 – Lakeside

514-630-1289

[paul.bissonnette@](mailto:paul.bissonnette@pointe-claire.ca)

[pointe-claire.ca](mailto:pointe-claire.ca)



**KELLY  
THORSTAD-CULLEN**

Councillor

District 3 – Valois

514-630-1290

[kelly.thorstad-cullen@](mailto:kelly.thorstad-cullen@pointe-claire.ca)

[pointe-claire.ca](mailto:pointe-claire.ca)



**TARA STAINFORTH**

Councillor

District 4 –

Cedar Park Heights

514-630-1291

[tara.stainforth@](mailto:tara.stainforth@pointe-claire.ca)

[pointe-claire.ca](mailto:pointe-claire.ca)



**CYNTHIA HOMAN**

Councillor

District 5 – Lakeside Heights

514-630-1292

[cynthia.homan@](mailto:cynthia.homan@pointe-claire.ca)

[pointe-claire.ca](mailto:pointe-claire.ca)



**DAVID WEBB**

Councillor

District 6 – Seigniorie

514-630-1293

[david.webb@](mailto:david.webb@pointe-claire.ca)

[pointe-claire.ca](mailto:pointe-claire.ca)



**ERIC STORK**

Councillor

District 7 – Northview

514-630-1294

[eric.stork@](mailto:eric.stork@pointe-claire.ca)

[pointe-claire.ca](mailto:pointe-claire.ca)



**BRENT COWAN**

Councillor

District 8 – Oneida

514-630-1295

[brent.cowan@](mailto:brent.cowan@pointe-claire.ca)

[pointe-claire.ca](mailto:pointe-claire.ca)

## COUNCIL MEETINGS

June 11, July 2, August 13, September 10, October 1, November 5, and December 3.

Council meetings are held in the Council Chamber at City Hall, 451 Saint-Jean Boulevard, at 7:30 p.m. Meetings are webcast on the City's website.

## A WORD FROM THE MAYOR



**JOHN BELVEDERE**  
MAYOR

### A DYNAMIC CITY THAT REFLECTS WHO WE ARE

Dear residents,

The members of City Council and I care about the well-being, health, and safety of each and every one of you, which can be seen in our everyday actions. In this sense, we work constantly to meet your needs by offering a wider variety of improved services while respecting your ability to pay.

We are continuing to prepare development plans for the future Tony-Proudfoot Park in the Greenwich neighbourhood. The park equipment will be completely accessible and inclusive in order to meet the needs of persons living with physical and intellectual disabilities.

As we are constantly working to implement our vision of sustainable development, we will launch a pilot project this summer to install urban container gardens at Arthur-Séguin Park and the Central Library. These gardens will allow all residents to become more familiar with urban agriculture and the best crops for these conditions.

In the same spirit of protecting the environment for current and future generations, this spring we launched a grant program for reusable hygiene products. This is yet another way to divert waste from landfill sites.

We are also continuing to reduce our environmental footprint by offering more online services. You can now access a new platform available on our website to apply for a permit from the comfort of your own home! You can also report a non-emergency situation to the City using the *Voilà ! Signalement* mobile app on your smartphone. This new online tool is another way for us to make your life easier and answer your requests.

Thank you for your trust and involvement.

A handwritten signature of John Belvedere in black ink. The signature is cursive and stylized, with the first letters of the first and last names being capitalized and prominent.

John Belvedere  
Mayor

# CITY NOTES



## NEWSLETTERS

Sign up on the City's website to get the latest news, information about upcoming events, and registration dates for activities!

Visit [www.pointe-claire.ca](http://www.pointe-claire.ca).

## MULTISERVICE COUNTER

The multiservice counter at City Hall offers centralized services for a wide range of requests.

### AT THE COUNTER, YOU CAN:

New

- Fill out a request to fell a tree;
- Fill out a grant request to treat or fell ash trees, as well as for reusable hygiene products;
- Get general information about the City;
- Pay your municipal taxes or water tax;
- Pay a fine from the City of Montréal;
- Apply for a job at the City;
- Purchase Pointe-Claire promotional items;
- Get or renew your MULTI Card;
- Get your bus or taxi tickets for eligible seniors;
- Purchase a rain barrel, household compost bin, and kitchen cone;
- Renew your dog licence.

## CITY HALL AND MUNICIPAL DEPARTMENTS

### Opening hours

Monday to Friday: 8:30 a.m. to 4:30 p.m.\*

### Summer hours – May 6 to October 11, 2019

Monday to Thursday: 8 a.m. to 4:30 p.m.\*

Friday: 8 a.m. to noon

\*The multiservice counter is open until 7 p.m. on Thursday.

Administrative offices (except for the Inspection – Public Security Department) will be closed on June 24, July 1, September 2, and October 14, 2019.



## CLAIMS

For all claims, you must fill out and send the form available on the City's website to the Legal Affairs Department and City Clerk's Office ([greffe@pointe-claire.ca](mailto:greffe@pointe-claire.ca)) within 15 calendar days of the incident. The form is also available at City Hall.

## PAYMENT OF MUNICIPAL TAXES

The second instalment of your municipal tax payment is due June 3, 2019.

### Access your tax bill online

#### SIGN UP AND YOU CAN:

- Receive an email informing you that your tax bill and water tax bill are available;
- Check your tax statements and bills;
- Receive a reminder about upcoming due dates.

To sign up, visit [www.pointe-claire.ca](http://www.pointe-claire.ca).

Information: 514-630-1300, ext. 1829

[taxes@pointe-claire.ca](mailto:taxes@pointe-claire.ca)



## MULTI CARD RENEWAL

The card is free and valid for two years.

It allows residents to register for all activities offered by the City and take advantage of free services, special rates, and priority passes.

To obtain or renew your card, go to the Central Library, the Aquatic Centre, or the multiservice counter at City Hall with a recent proof of residence with a photo.

For the complete list of benefits or for more information, visit [www.pointe-claire.ca](http://www.pointe-claire.ca).



## PROMOTIONAL ITEMS

Several useful and practical items featuring the City logo are available for purchase at affordable prices.

You can get them at the multiservice counter at City Hall. Visit [www.pointe-claire.ca](http://www.pointe-claire.ca) for the list of promotional items.



## A LICENCE IS MANDATORY FOR YOUR DOG

Go to the multiservice counter at City Hall to purchase a licence for \$25. Licences are renewable every year in May, and your bill will be mailed to you in April. A \$5 fee will be charged for a lost tag.

Please let us know if you no longer need to renew a licence (514-630-1300, ext. 1829).

Licences for guide dogs are free of charge with proof.



## HOW TO GET IN TOUCH WITH US

### CITY DEPARTMENTS

**CITY HALL**  
451 Saint-Jean Boulevard  
514-630-1200

**MAYOR'S OFFICE**  
514-630-1207  
john.belvedere@  
pointe-claire.ca

**CITY MANAGER'S OFFICE**  
514-630-1237  
direction@pointe-claire.ca

**LEGAL AFFAIRS AND CITY CLERK'S OFFICE**  
514-630-1228  
greffe@pointe-claire.ca

**COMMUNICATIONS**  
514-630-1200  
communications@  
pointe-claire.ca

**ENGINEERING AND BUILDINGS**  
514-630-1208  
ingenierie@  
pointe-claire.ca

**TAXES**  
514-630-1300, ext. 1829  
taxes@pointe-claire.ca

**PUBLIC WORKS**  
514-630-1230  
tp@pointe-claire.ca

**PLANNING**  
514-630-1206  
urbanisme@  
pointe-claire.ca

**INSPECTION – PUBLIC SECURITY**  
399 Saint-Jean Boulevard  
514-630-1234  
secpub@pointe-claire.ca

**VOLUNTEER RESCUE UNIT**  
2A Victoria Avenue  
514-630-1224  
rescueunit@  
pointe-claire.ca

### LEISURE AND CULTURE

**RECREATION**  
94 Douglas-Shand Avenue  
514-630-1214  
recreation@  
pointe-claire.ca

**ARENA**  
58 Maywood Avenue  
514-630-1211  
arenabobbirnie@  
pointe-claire.ca

**CENTRAL LIBRARY**  
100 Douglas-Shand Avenue  
514-630-1218  
bibliotheque@  
pointe-claire.ca

**LIBRARY – VALOIS BRANCH**  
68 Prince-Edward Avenue  
514-630-1219  
bibliotheque@  
pointe-claire.ca

**STEWART HALL CULTURAL CENTRE**  
176 Du Bord-du-Lac – Lakeshore Road  
514-630-1220  
stewarthall@  
pointe-claire.ca

**AQUATIC CENTRE**  
60 Maywood Avenue  
514-630-1202  
aquatique@  
pointe-claire.ca

**NAUTICAL ACTIVITIES**  
75 Du Bord-du-Lac – Lakeshore Road  
514-630-1256  
infocanoe@  
pointe-claire.ca

### AGGLOMERATION SERVICES

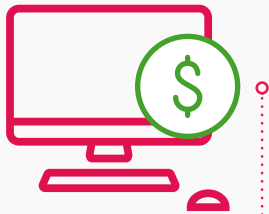
**POLICE: SPVM (SERVICE DE POLICE DE LA VILLE DE MONTRÉAL)**  
(Station 5)  
395 Saint-Jean Boulevard  
514-280-0105  
pdq5@spvm.qc.ca

**FIRE: SERVICE DE SÉCURITÉ INCENDIE DE MONTRÉAL**  
401 Saint-Jean Boulevard  
514-280-0871

# ONLINE SERVICES

## NEW PLATFORM FOR PERMIT APPLICATIONS

Some permit or certificate applications are now available on a new platform where you can fill out the form, send the required documents, and even pay online in certain cases.



### WHAT PERMIT OR CERTIFICATE APPLICATIONS ARE AVAILABLE ONLINE?

The following applications can be made on the new platform:

- Felling trees (**free**)
- Building an extension
- Constructing a new building
- Installing a fence
- Installing a mechanical device
- Installing a pool or hot tub
- Performing indoor and outdoor renovations
- Replacing or repairing private services
- Installing a propane container
- Installing or renovating a driveway or performing landscaping work
- Performing earthwork (levelling)

Flat-rate permits and certificates can be paid online and are listed as such.

All required documents for the application must be scanned. A photo of a document will not be accepted.

**For any other permit or certificate applications, please check the City's website for the procedure to follow or contact the Planning Department at 514-630-1206.**

### HOW LONG WILL I HAVE TO WAIT FOR MY PERMIT?

Confirmation that your online permit application has been received will be sent within three working days.

Once your application is complete, it may take up to 30 working days to process it in order to analyze it and ensure it complies with by-laws. This period varies depending on the type of request and the number of requests examined at the time your application was filed.

The work may begin only once the permit has been issued.

### WHERE SHOULD I DISPLAY MY PERMIT?

Your permit must be visible from the street while the work is in progress.

#### Felling trees

For any questions about this certificate application, contact the Public Works Department at 514-630-1230, [tp@pointe-claire.ca](mailto:tp@pointe-claire.ca).

More online permit applications are constantly being added to the list: [www.pointe-claire.ca](http://www.pointe-claire.ca).

# REPORT A NON-EMERGENCY SITUATION IN JUST A FEW CLICKS

**YOU CAN SUBMIT A REQUEST TO REPORT A NON-EMERGENCY SITUATION WITH YOUR SMARTPHONE IN JUST A FEW CLICKS.**

**The Voilà! Signalement app allows you to:**



- request a branch pick-up



- report a situation with the website



- report damaged urban furniture



- report a defective street lamp



- apply for a grant



- report a pothole

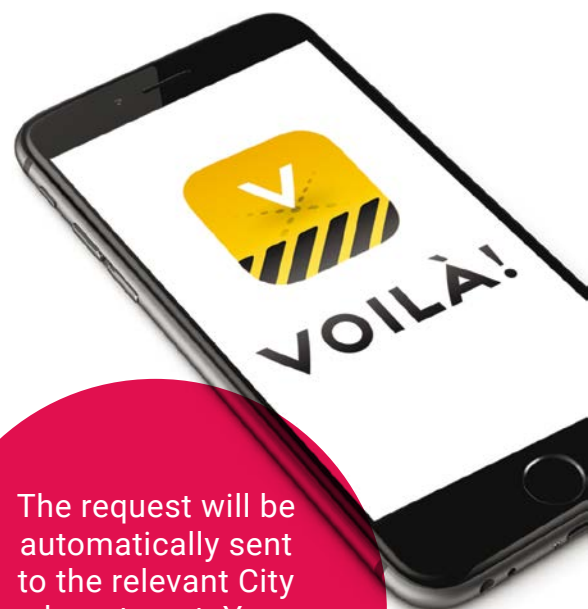


- request repairs to a recycling or organic waste bin or have them replaced



- request information about programs

- and more!



The request will be automatically sent to the relevant City department. You will receive an email once the situation has been resolved.

## HERE IS HOW TO REPORT A SITUATION IN FOUR EASY STEPS:



1. Download the **Voilà! Signalement** free mobile app on the App Store (iOS) or on Google Play (Android) and create your profile.
2. Click on "Nouvelle demande" (New Request) and select "Pointe-Claire". You can also attach a photo of the situation you want to report.
3. Select the nature of your request from among the choices available.
4. Specify the location of the situation you want to report and send your request.



# REVITALIZATION OF THE VILLAGES

The Village Code has been recognized by the Ordre des urbanistes du Québec and the Union des municipalités du Québec for its innovative nature.

To track the progress of the Special Planning Programs, visit our online platform, *Pointe-Claire, It's Who We Are* ([itswhowere.pointe-claire.ca/](http://itswhowere.pointe-claire.ca/)), and sign up for the City's newsletter.

The Special Planning Programs for Pointe-Claire and Valois Villages, adopted in 2016 and 2017, are currently being implemented. These planning tools offer a vision for the development of an area of special interest.

Here is a summary of various actions that have been taken since the Special Planning Programs were adopted.

## POINTE-CLAIRE VILLAGE

- Redeveloping Cartier Avenue into a complete street with a bicycle path, a green strip, a narrowed roadway, and winding lanes to slow down traffic.
- Adopting the Village Code, a new planning by-law based on urban form to guide projects and protect the Village's unique character.
- Adopting the Conservation Plan for the La pointe Claire Heritage Site to help residents better understand the heritage site and define its policy directions.
- Adopting a policy to optimize parking, which will include installing directional signs to guide users as one of its first actions.
- Improving facilities and events, including adding new Canada Day activities, distributing string lights to merchants with PME MTL, and adding dry toilets in the summer.



## VALOIS VILLAGE

- Increasing security for pedestrians and cyclists by developing a protected bicycle path on the south side of Donegani Avenue.
- Performing a study on traffic related to the new housing units on the east side of the Village in order to improve the safety of road users.
- Performing an ongoing study on parking space optimization.





---

## ENVIRONMENT

### SHEEP AT EDGEWATER PARK

Following their success last year, the sheep will be back at Edgewater Park this summer to maintain the park in an environmentally friendly way.

- Residents can watch and pet the sheep at all times.
- A wide variety of educational and recreational activities with the sheep will be planned throughout the summer.
- In case of rain, storms, and heat waves, the sheep will be placed in a shelter, and activities will take place at the Noël-Legault Community Centre (245 Du Bord-du-Lac – Lakeshore Road).

Sign up for the City newsletter to find out when the sheep will arrive and what activities will be planned:

[www.pointe-claire.ca](http://www.pointe-claire.ca)

# PILOT PROJECT – URBAN CONTAINER GARDENS

Eight container gardens will be installed this summer near the Central Library and the Arthur-Séguin Chalet (365 Saint-Louis Avenue) to combine urban gardening and food to our sustainable development initiatives.

NEW



Made with repurposed ash wood, these containers will allow everyone to pick herbs and vegetables for their recipes!

## GREEN LINE

A free phone line service is available from June to August to answer your questions about environmentally friendly lawn maintenance; weeds; harmful plants, insects, and animals; alternatives to pesticides and actions to reduce your environmental footprint.

**Our expert will give you information about the best practices.**

### Environmentally friendly lawn

Learn about environmental practices to make your soil and lawn healthier, such as managing weeds, grasscycling, and household composting.



### Harmful plants and unwanted visitors

Ragweed, poison ivy, skunks, and white grubs are not always welcome. Contact us for a strategy to keep them at bay.



### Environmental footprint

Call us to learn about simple actions to reduce our environmental footprint every day.



### Pollinators

Would you like to attract pollinators to your yard? It would be our pleasure to help.



The service is available Monday to Thursday from 8 a.m. to 4:30 p.m. and Friday from 8 a.m. to noon. Contact Public Works at 514-630-1230 or at [tp@pointe-claire.ca](mailto:tp@pointe-claire.ca).

# COMMEMORATIVE PROGRAMS

## ONE BIRTH, ONE MEMORY, ONE TREE

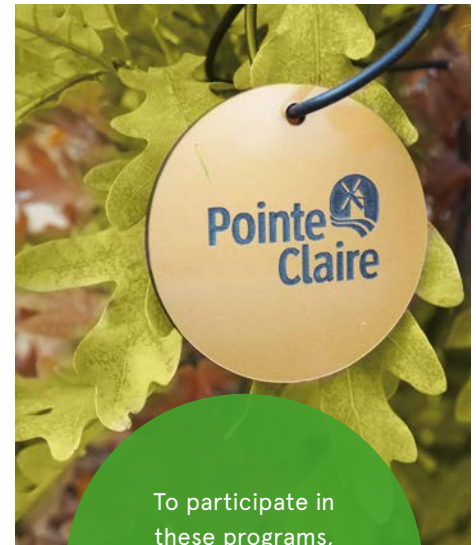
You can plant a tree on public land to celebrate a birth or commemorate a death.

### ELIGIBILITY CRITERIA

- In the event of a birth, the newborn and the person making the request must live in Pointe-Claire.
- To pay tribute to a deceased resident, the request must be made by a family member living in Pointe-Claire.
- The request must be made within 12 months following the birth or death.

Trees planted as part of this program will have a medallion with the loved one's name. The person who made the request will also receive a card with the location of the tree and the species selected. Planting takes place in the fall.

The City provides this service free of charge.



To participate in these programs, contact Public Works at 514-630-1230 or at [tp@pointe-claire.ca](mailto:tp@pointe-claire.ca).

## COMMEMORATIVE BENCHES

You can have a plaque installed on a bench in the City in memory of a person.

### ELIGIBILITY CRITERIA

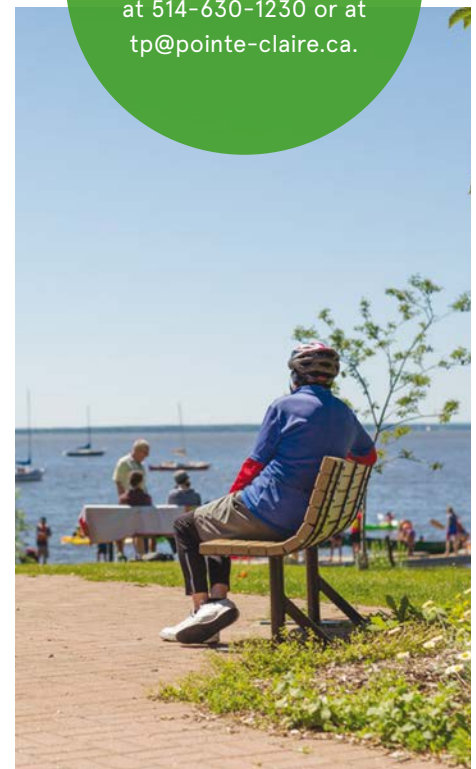
- The person you wish to commemorate must have been a Pointe-Claire resident.
- A person can make only one request per year, and one plaque is authorized per bench.
- You may be able to choose the bench.

The commemorative period is 25 years. You can also collect the commemorative plaque three months before the end of this period.

The cost for this request is \$800\* plus tax and includes production, installation, and maintenance. A fee of \$500\* plus tax will be charged for an additional 25-year period.

The City can provide this service and engrave an inscription of up to 350 characters in length on a 6" by 4.5" stainless steel plaque.

\*These rates are revised annually.





---

## EDUCATIONAL GARDENS

There are two educational gardens where everyone can observe pollinating insects and learn more about these species, their habits, their roles, and their importance for biodiversity through various interpretive panels.

### MONARCH WATCHING

The monarch butterfly educational garden is located at the intersection of Belmont and Saddlewood Avenues.

A monarch celebration will take place in September, with artistic and educational activities for children to enjoy. More details will be in the Fall edition of *Leisure Pointe-Claire*, which will be available in August.

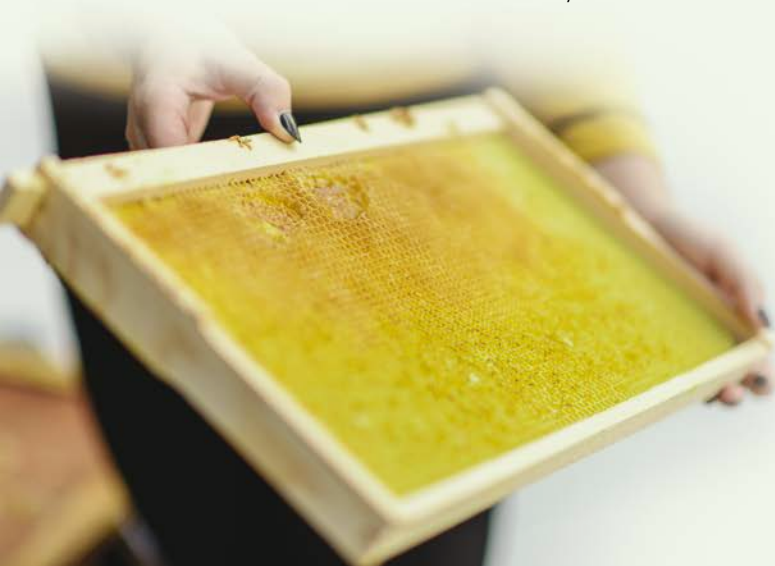


---

### BEE WATCHING

The bee educational garden is located at the end of Viburnum Avenue, which is accessible via Maywood Avenue.

Since the summer of 2017, beehives have been installed on the roof of the Central Library. Located near Terra-Cotta Natural Park and the bee educational garden, they offer shelter to our pollinators during the summer in order for them to make delicious honey.



# TERRA-COTTA NATURAL PARK

Walk through the paths in this wooded area of great ecological value to observe biodiversity and to learn more about the history of the park, its wildlife and plant life with the 12 interpretive panels, two of which are interactive.



## Rules to help preserve the park:

### Respect the environment



### Stay on the paths

Maintenance in the park is kept to a minimum to let nature take its course while ensuring everyone's safety and comfort. Paths are marked and informal paths are closed to increase biodiversity.



### Keep your dog on a leash and pick up its droppings

For your pet's safety and for the benefit of the wildlife in the park, dogs must be kept on a leash. You must also pick up your dog's droppings and dispose of them in the trash, in accordance with existing by-laws.



### Walk

To ensure the safety of people walking in the park, riding bicycles is forbidden. Moreover, repeated use of bicycles increases soil compaction and creates ruts in the paths, deteriorating them.



During your next visit,  
you could see a  
great horned owl  
or a brown snake.





# WASTE MANAGEMENT

## THE WASTE MANAGEMENT SQUAD IS BACK

The Squad will be out on the streets of Pointe-Claire on bicycles again this summer until mid-August to share tips to make it easier to participate in various collections and promote good environmental practices.

### Make an appointment now to learn all about:

- which materials are accepted in various collections;
- sorting waste;
- composting at home;
- tips to make it easier to participate in the organic waste collection;
- and much more.

514-630-1230, [tp@pointe-claire.ca](mailto:tp@pointe-claire.ca)

### Organic Waste Check

The Waste Management Squad will open bins at random in order to check their contents and place stickers on them to acknowledge residents who have properly sorted their waste!



## WASTE SORTING AWARENESS CAMPAIGN

This summer, Mr. Compost, along with Ms. Recycling and Mr. Waste, will help the Waste Management Squad promote proper sorting habits.

Stay tuned all summer long as they help you manage your waste.



## SORTING TOOL – SEARCH BY MATERIAL

Do you have questions about sorting your waste?

Visit [www.pointe-claire.ca/en/search-by-material](http://www.pointe-claire.ca/en/search-by-material) and enter your waste material to find out the best way to dispose of it.



# YOUTH ADVISORY BOARD

The first Youth Advisory Board has been hard at work since January.

Its mandate: to offer recommendations to City Council to improve activities, facilities and public services in order for them to better meet the needs of young residents.

## ELECTIONS

During their first meeting, members who were interested in filling the positions of Board President and Vice-President gave a speech to their colleagues in order to share their vision and explain why they were the ideal candidate.

## VOTING RESULTS

### PRESIDENT

Christophe Kélada was elected President. This sports enthusiast who enjoys the outdoors and creating videos is full of original ideas to reach out to Pointe-Claire youth more than ever.

As President, Christophe acts as Board spokesperson at various events. He conducts meetings and ensures that the mandate is respected and that decisions are implemented.

### VICE-PRESIDENT

Katherine Dulong was elected Vice-President. A dietetics student at McGill University, she is committed to her community as a volunteer and tutor in addition to being a member of the Masters Swim Team, all of which help her to fulfill her various duties.

As Vice-President, Katherine works closely with the President at all times in order for Board events to proceed smoothly and various projects to be completed.

## PASSIONATE AND MOTIVATED YOUTH

The first Youth Advisory Board has been hard at work since January. Its mandate is to offer recommendations to City Council to improve activities, facilities and public services in order for them to better meet the needs of young residents.

The members have already demonstrated their commitment to the well-being of youth in our community by taking part in meetings, preparing presentations, and sharing new ideas. For example, Annah-Benedicte Mbongo took part in a meeting via videoconference while she was out of the country for a training camp with the Pointe-Claire Canoe Kayak Club.



Christophe Kélada



Katherine Dulong



Annah-Benedicte Mbongo



## RECOGNITION

On January 4, Jane Weber was interviewed on live radio to explain the role of the Board, its motivations and what it hopes to do. Jane did a fantastic job during her interview!



Jane Weber

## UPCOMING EVENTS

The Youth Advisory Board members will be at various City events throughout the summer. You can find out more about these events in *Leisure Pointe-Claire* and *Culture Pointe-Claire*.

### SKATEPARK INAUGURATION

On June 15 from 11 a.m. to 1 p.m., everyone is invited to attend the inauguration of the skatepark located on Douglas-Shand Avenue, next to the Aquatic Centre. The Youth Advisory Board has planned a variety of activities that are sure to please everyone: professional demonstrations, an introductory workshop, a band, a barbecue, and refreshments!



### CITY COUNCILLORS' TENT ON CANADA DAY

The Youth Advisory Board will share a tent with the City Councillors on Canada Day, July 1, in Pointe-Claire Village. Drop by starting at 4:30 p.m. to meet them, ask your questions, and suggest your ideas.



### LUMINA MURAL

As part of the *Lumina* exhibition, the Youth Advisory Board invites young residents to take part this summer in a collaborative mural project based on the theme of light. The dates will be announced on the City's website.



### LUMINA FESTIVE EVENING

As part of the *Lumina* exhibition, which will take place from July 7 to August 25 at the Stewart Hall Cultural Centre, the Youth Advisory Board is planning an evening dedicated to our youth on Wednesday, August 14, from 6 to 8 p.m., at the Stewart Hall Art Gallery. Featuring: a DJ, refreshments in a rainbow of colours, hors-d'œuvres, and much more to make this dazzling evening a success.

# GRANTS

## REUSABLE HYGIENE PRODUCTS

In March, the City implemented a pilot project providing grants of up to \$200 for the purchase or rental of reusable diapers, feminine hygiene products, and incontinence products.

### HOW TO OBTAIN A GRANT

Visit the multiservice counter at City Hall with your MULTI Card and the required supporting documents.

#### DIAPERS

Required proofs:

- Completed grant request form (available on the City's website)
- Original receipt
- Proof of payment from a purchase made less than six months ago
- Birth certificate

A grant of up to \$200 is applicable for washable diapers, washable swim diapers, waterproof bags, and fabric to make diapers until the age of 24 months.

### FEMININE HYGIENE AND INCONTINENCE PRODUCTS

Required proofs:

- Completed grant request form (available on the City's website)
- Original receipt
- Proof of payment from a purchase made less than three months ago

A grant of up to \$100 is applicable for menstrual underwear and cups, washable sanitary napkins, reusable tampon applicators, washable underwear and liners for urinary leaks and incontinence, waterproof bags, and fabric to make underwear and liners for urinary leaks and incontinence.

**Q** We have two children in diapers. Will we receive a grant of up to \$400?

**A** Yes. The grant for diapers is applicable until the age of 24 months for each child living at the same address. After 24 months, the maximum grant is \$100.

**Q** We purchased second-hand reusable diapers. Are these eligible for the grant?

**A** Yes. You must fill out a form confirming this transaction with the seller before submitting your application. The form is available on the City's website.



For more  
information, contact  
Public Works at  
514-630-1230,  
tp@pointe-claire.ca.

## LOW-FLUSH TOILETS

Do you want to make an environmentally responsible gesture? You can replace your standard toilet with a low-flush model! All low-flush toilet models (single - and dual - flush) using a maximum of 4.8 litres per flush are eligible. You could receive up to \$90 when you switch to a low-flush toilet, up to a maximum of two toilets per address per year.

### OBTAINING A GRANT

Fill out the form available at [www.pointe-claire.ca](http://www.pointe-claire.ca) and send it with all required documents to [urbanisme@pointe-claire.ca](mailto:urbanisme@pointe-claire.ca) or to the City Hall multiservice counter.

For more information, contact the Planning Department at 514-630-1206.



## ASH TREE FELLING

A felling grant is provided for **ash trees with a diameter of 25 centimetres or more** as part of the strategy to fight the emerald ash borer. **Felling is permitted between October 1 and March 14**, and is mandatory if an ash tree is infected by this insect. **The grant covers 50% of felling costs**, up to a maximum of \$200 per tree.

### OBTAINING A GRANT

1. Fill out an online felling permit ([www.pointe-claire.ca](http://www.pointe-claire.ca)).
2. An inspector will visit your property to evaluate the trees that need to be felled and make recommendations. The felling certificate will be sent to you free of charge no later than 30 days after the application is filed.
3. Send the receipt confirming your payment by email ([tp@pointe-claire.ca](mailto:tp@pointe-claire.ca)) or in person at the City Hall multiservice counter and leave your contact information (name, address, telephone number).

## PREVENTIVE TREATMENT FOR ASH TREES

Preventive treatment is offered for healthy ash trees. It involves injecting a natural insecticide at the base of the trunks and acts for two years. **The grant covers 50% of the treatment cost** for homeowners, up to a maximum of \$1,500 over two years for each residential address. The treatment must be applied between **June 15 and August 31**.

### OBTAINING A GRANT

1. Contact Public Works before August 15 to have your ash trees inspected.
2. If the inspector confirms that your tree needs to be treated, a company selected by the City will apply the treatment at a rate of \$3.73 / centimetre. Any other qualified firm may be selected, using the same procedure. The grant will apply to the City's rate or the rate of the selected contractor if it is lower.
3. Send the receipt confirming your payment by email ([tp@pointe-claire.ca](mailto:tp@pointe-claire.ca)) or in person at the City Hall multiservice counter and leave your contact information (name, address, telephone number).



## BY-LAWS

### CONSTRUCTION OR RENOVATION WORK

Before undertaking your construction or renovation project, we recommend that you contact the Planning Department to find out if a building permit or a certificate of authorization is required.

Some applications can be filled out online: see page 7 for details.



### TEMPORARY SWIMMING POOLS

A temporary inflatable swimming pool containing water more than 45 centimetres (18 inches) deep must meet the same requirements as a conventional pool, and a certificate of authorization is required to install it.



### CANNABIS CONSUMPTION

The City's by-law prohibits cannabis consumption in all public places in the city.

As with alcohol consumption, it is forbidden to consume cannabis on sidewalks, bicycle paths, pedestrian trails, parks, and in all outdoor aquatic and sports facilities, including municipal buildings.



### HOME OFFICES

In keeping with changing job market practices and to continue to improve quality of life, the City may give permission to any owner of a detached single-family dwelling to work at home, as long as certain criteria and conditions are met, to manage a business, provide personal or professional services, or work as a craftsperson.

**For more information, contact the Planning Department at 514-630-1206.**

### GOOD NEIGHBOURS

Noise that is disturbing to others is forbidden between 11 p.m. and 7 a.m. Noise is considered disruptive if its sound level exceeds the ambient noise by more than 5 decibels.

The noise level of appliances such as air conditioners and mechanical or pump heating equipment must not exceed 60 decibels between 7 a.m. and 9 p.m. and 50 decibels between 9 p.m. and 7 a.m.

The use of electric, pneumatic, mechanical, or other devices outdoors is permitted between 7 a.m. and 9 p.m. during the week, and between 9 a.m. and 5 p.m. on Saturdays, Sundays, and holidays.

Respect: the best way to live in harmony!



**If there is a discrepancy between the explanations on this page and any by-law, the wording of the by-law will prevail.**



# SECURITY SIGHT TRIANGLE

If your property is located on a street corner, a sight triangle must be kept clear at all times to ensure the safety of all road users.

## WHAT IS A SIGHT TRIANGLE?

It is a triangular space on the corner of a property located at the intersection of two streets. This space must be kept clear in order to optimize the field of vision for motorists, cyclists, and pedestrians and ensure everyone's safety.

## WHAT IS PERMITTED IN THIS ZONE?

- Any fences, hedges, or landscaping elements with a maximum height of 91 centimetres (3 feet) measured from the street level;
- Any existing trees with no branches or leaves 1 to 3 metres above the public right-of-way.

In order to improve visibility on street corners, it has been forbidden to plant new trees, shrubs, or hedges within the sight triangle since January 2015.

## WHAT IS MY RESPONSIBILITY IF MY PROPERTY IS ON A STREET CORNER?

You must keep this space clear at all times, whether by trimming your hedges or bushes or by cutting tree branches.

If there is a discrepancy between the explanations on this page and the by-law, the wording of the by-law will prevail.

If you have any questions about the sight triangle, contact the Inspection – Public Security Department at 514-630-1234 or at [secpub@pointe-claire.ca](mailto:secpub@pointe-claire.ca).

Curb, sidewalk, or pavement



# ROAD SAFETY CAMPAIGN

Our road safety campaign is back this summer to raise awareness in the entire community about obeying the speed limits on our roads with positive and friendly signs installed in front of your home.

Still featuring the slogan *Slower is safer*, the 2019 edition will include new signs with Buddy, the City mascot, focused on the new 40 km/h speed limit in all residential areas.

The signs are now available free of charge! From June to September, there will be a monthly draw to win a City gift basket from among all residents who requested a sign. To get your sign, contact the Inspection – Public Security Department at 514-630-1234 or at [secpub@pointe-claire.ca](mailto:secpub@pointe-claire.ca). You can also visit the multiservice counter at City Hall (451 Saint-Jean Boulevard).

The signs are now available free of charge!



Get a sticker for your vehicle or bicycle! Available at the multiservice counter at City Hall and distributed by the Inspection – Public Security Department during events.



## EMERGENCY MEASURES

### BE PREPARED TO BE SELF-SUFFICIENT FOR 72 HOURS

That is how long it could take for emergency workers to get to you, or for public utilities to be restored.

#### THESE ITEMS ARE RECOMMENDED FOR YOUR BASIC EMERGENCY KIT:

- Drinking water: 2 litres per person per day, for at least three days
- Non-perishable foods: enough to last at least three days
- Manual can opener
- Flashlight with spare batteries
- Battery-operated radio with spare batteries
- First-aid kit and any medications you need
- Candles
- Lighters and matches

Assemble your kit to suit your needs and place items in a bag or container ahead of time.



### AUTOMATED CALL SERVICE

Sign up for the City's automated emergency call service so that we can reach you when broadcasting alerts and general advisories by phone (call or text message) or by email.

To register a phone number, visit [www.pointe-claire.ca](http://www.pointe-claire.ca).





# TONY-PROUDFOOT PARK

Last year, Pointe-Claire residents took part in a contest to choose a name for the park located at the intersection of Gendron and Des Frênes Avenues in the Greenwich neighbourhood in District 6 – Seigniory.

In February, the community once again voiced its opinion and helped with the planning and development of the future Tony-Proudfoot Park. It will include universally accessible equipment for playgrounds and rest areas for children aged 2 to 12 and walking paths.

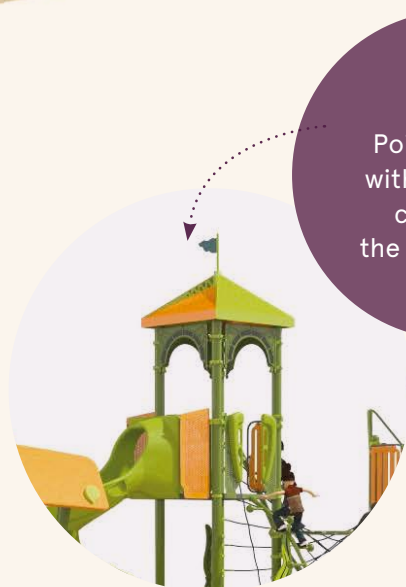
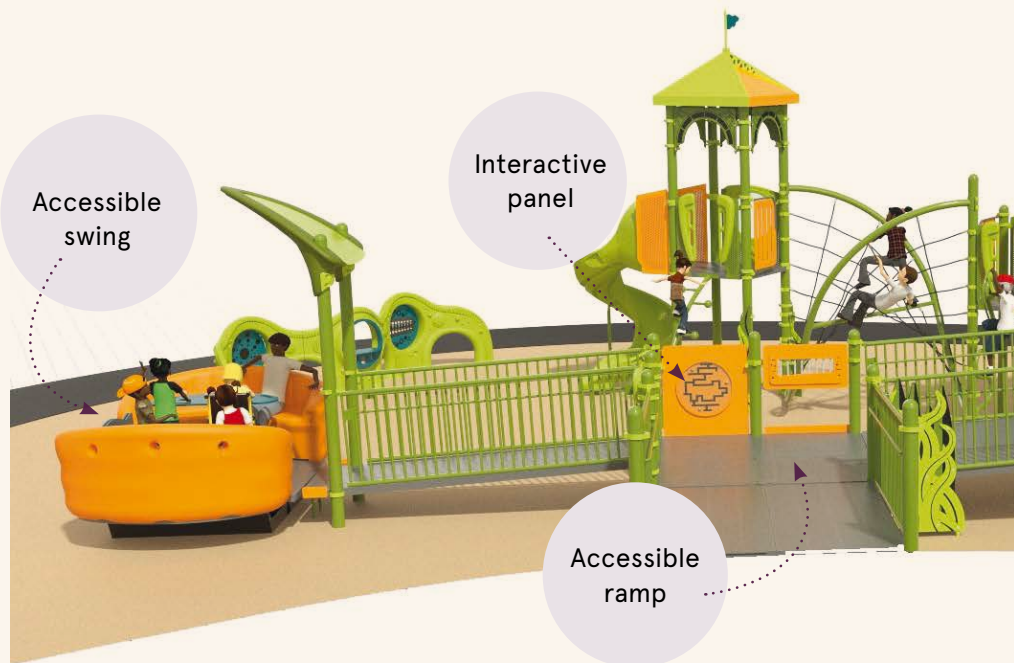
The new park will be inclusive and accessible to children with special needs, both physical and intellectual.

Honouring its namesake, Mr. Proudfoot, this park will give everyone a chance to move!

## TIMELINE

The timetable will be announced as soon as the development contract has been awarded.

Following a public consultation and online polls on our platform, *Pointe-Claire, It's Who We Are*, here are the preliminary development plans:



Pointed roofs with flags were chosen by the community.





Interactive panel  
illustrating  
sign language



COMMUNITY  
CHOICE



Enclosed  
play area  
Ages 2 to 5

Six-foot-high  
landing

Play area  
Ages 6 to 12

Dome for children  
to climb or rest inside



Interactive  
panel

Protective playground surface  
in poured rubber covered with durable,  
comfortable, and safe synthetic turf.